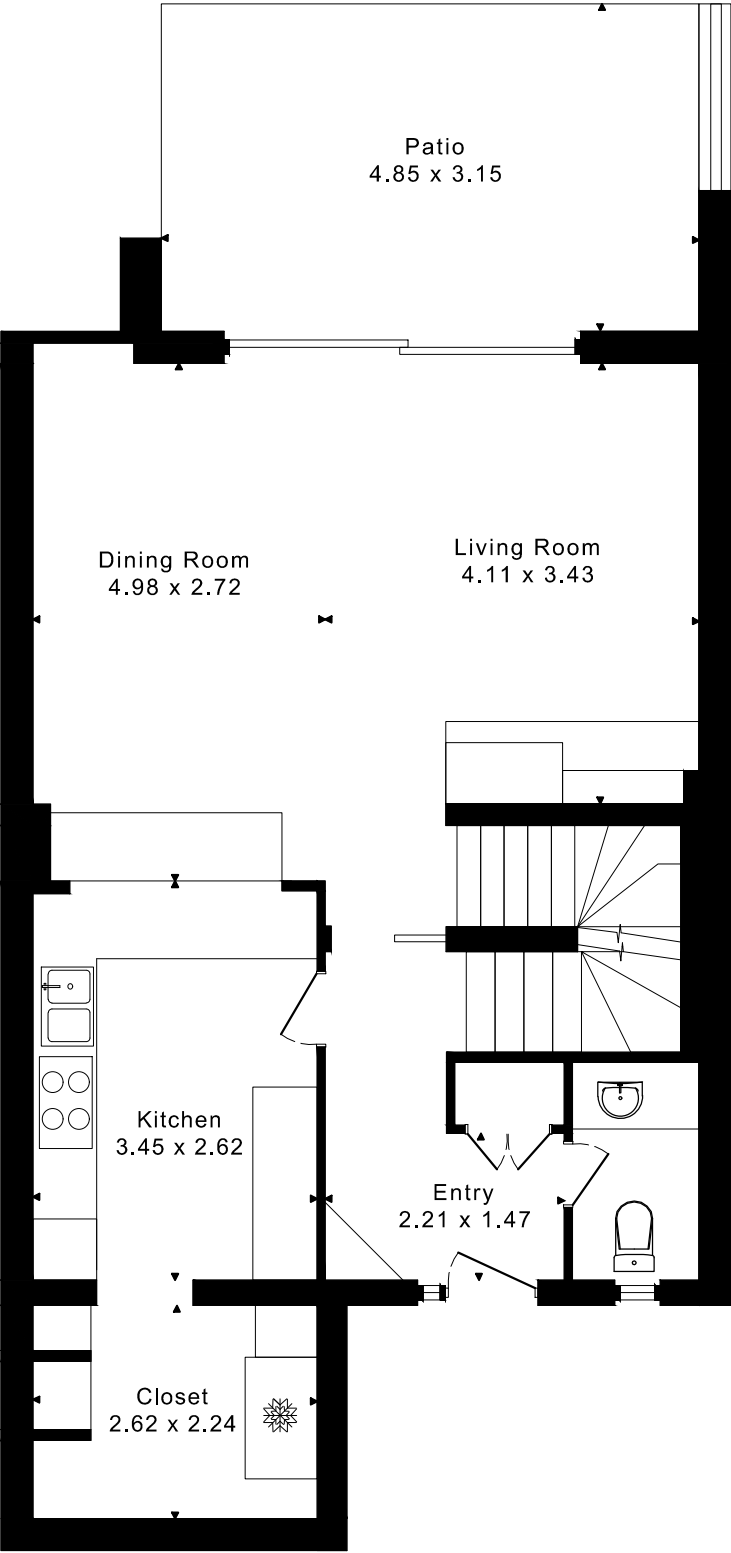
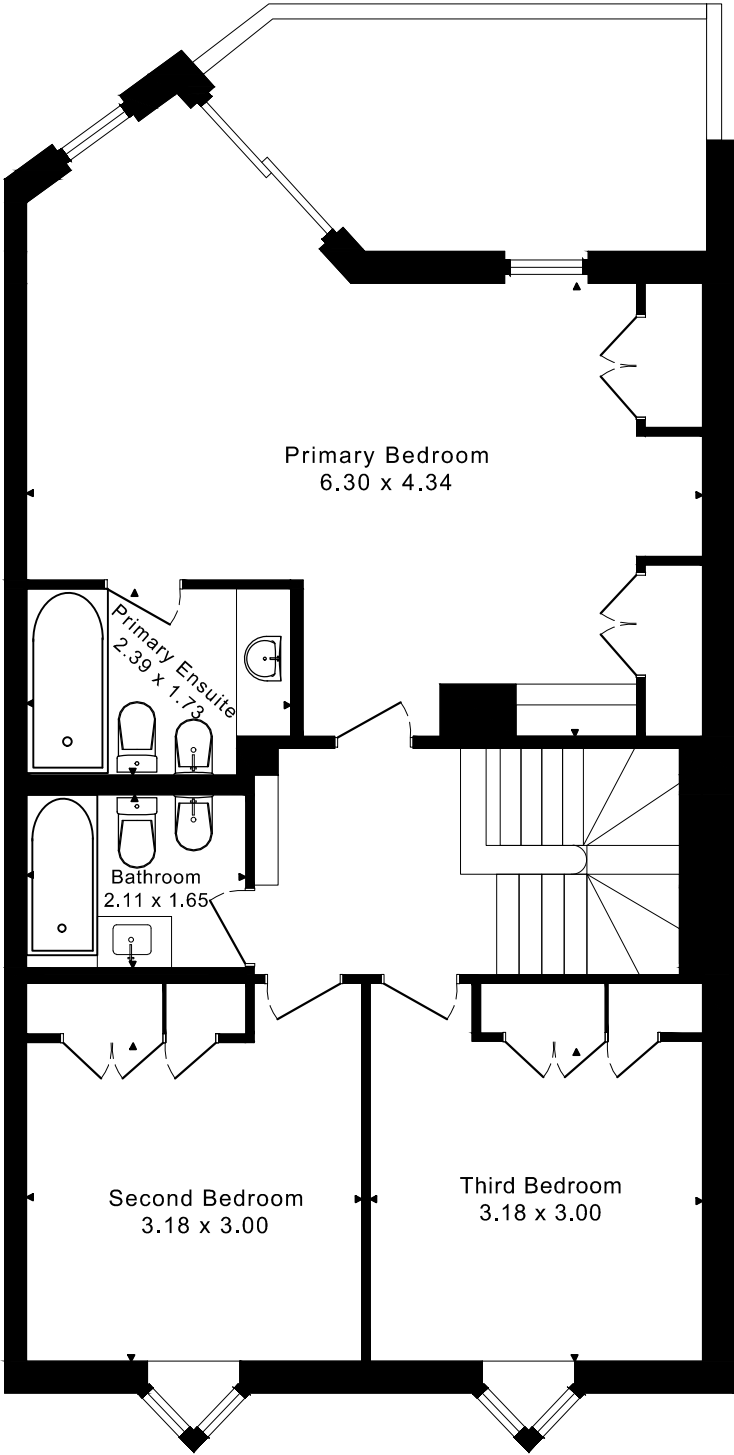


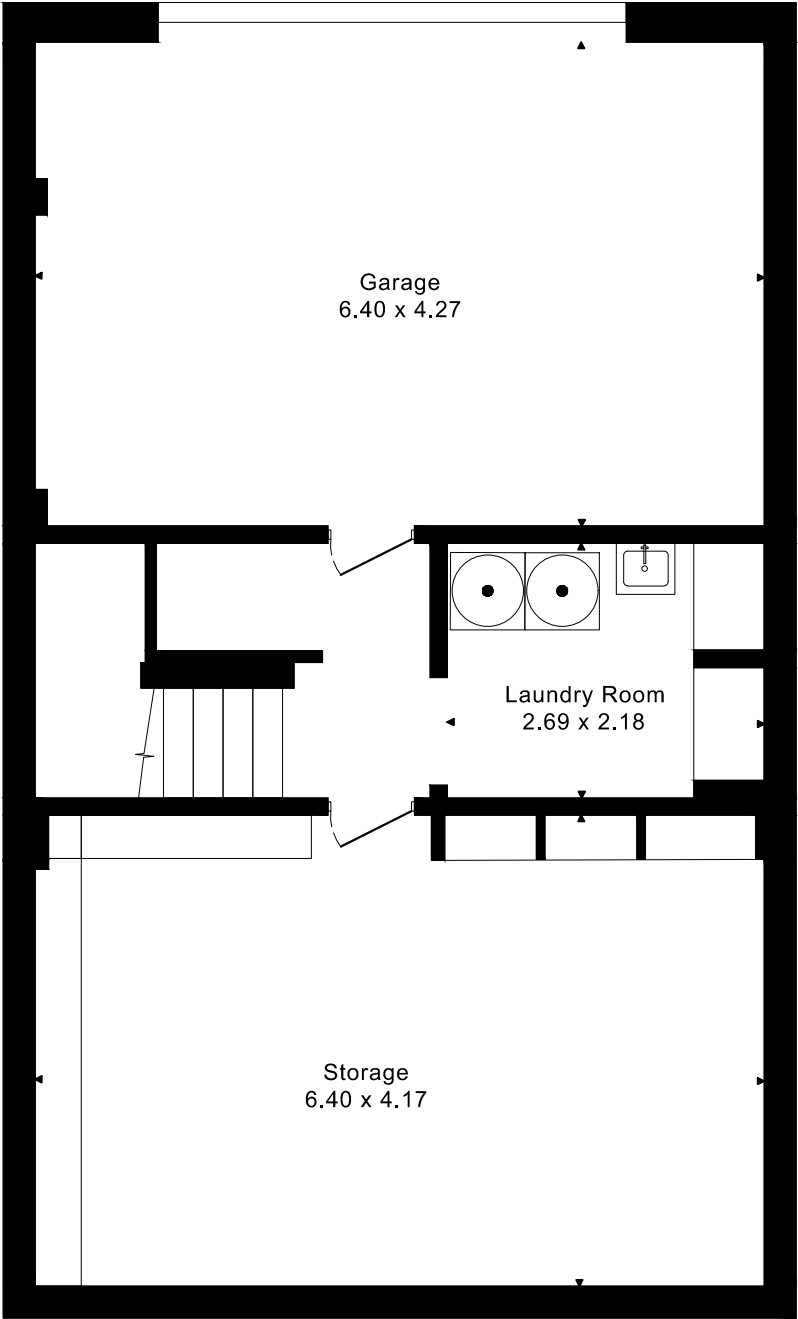
14 PASEO DEL RIO
FLOOR PLANS



MAIN FLOOR
69.65 SQUARE METER



SECOND FLOOR
76.70 SQUARE METER

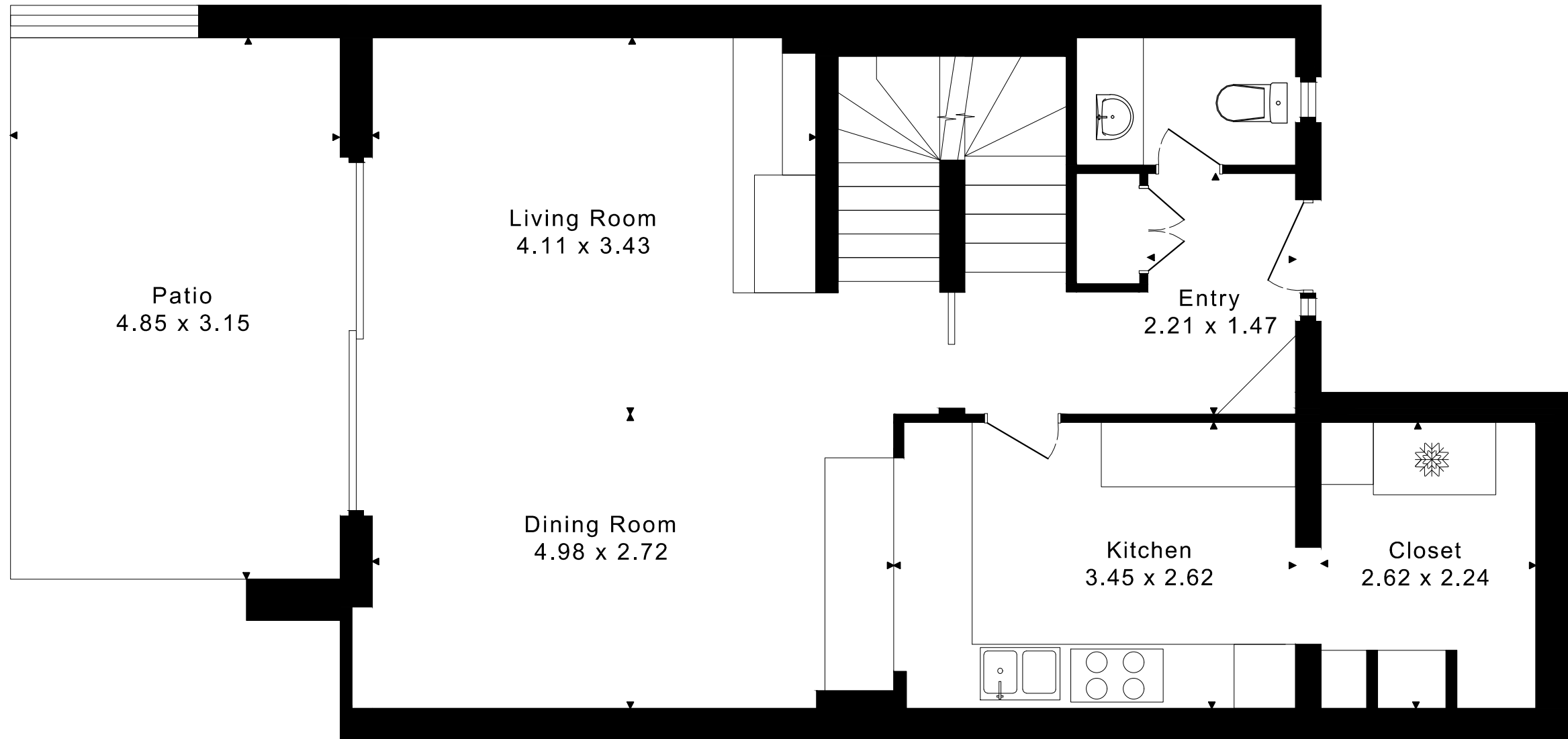


LOWER FLOOR
90.20 SQUARE METER

146.35 sq. met.+ 90.20 sq. met.
BELOW GRADE

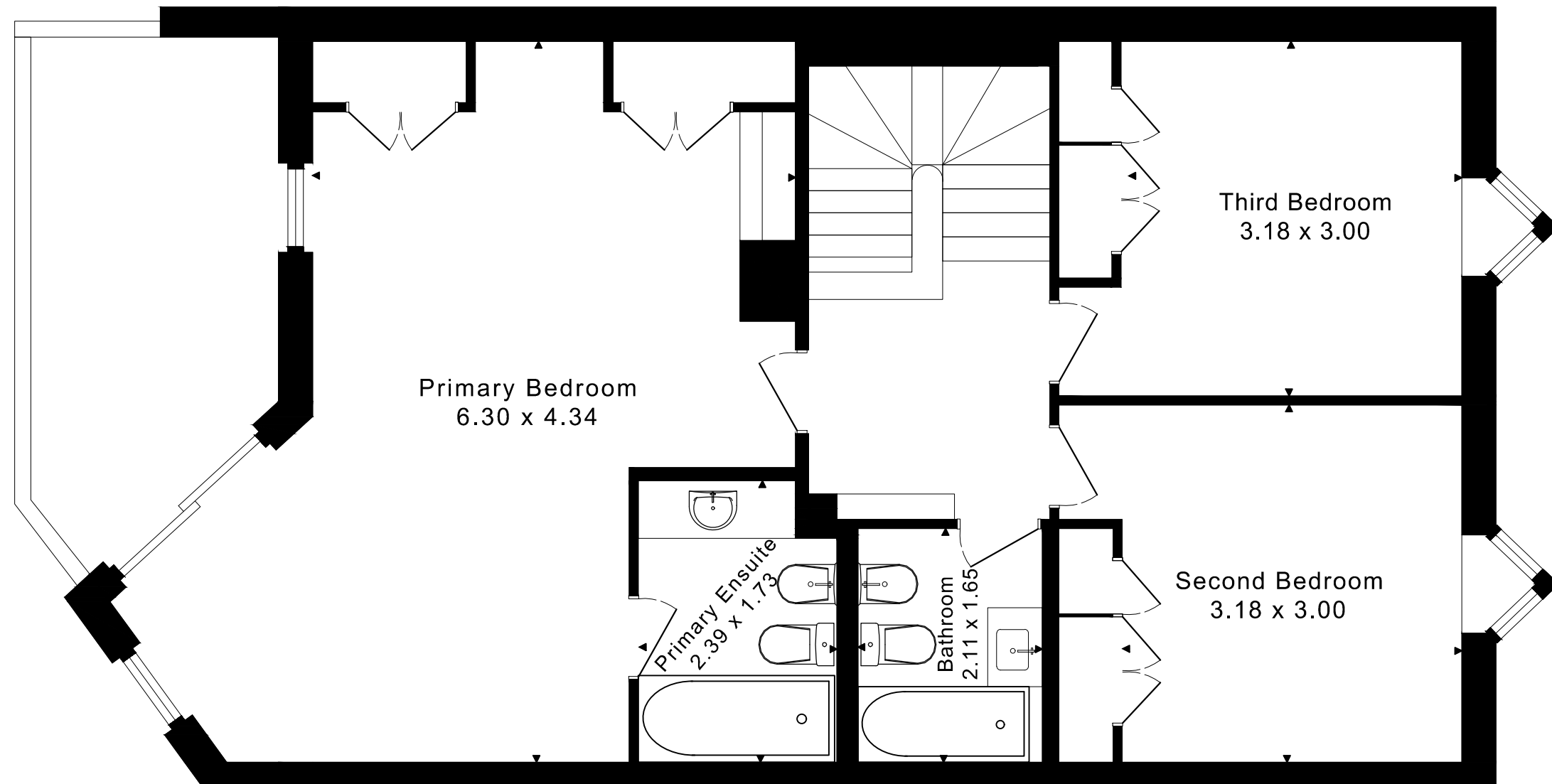
14 PASEO DEL RIO FLOOR PLANS

MAIN FLOOR 69.65 SQUARE METER

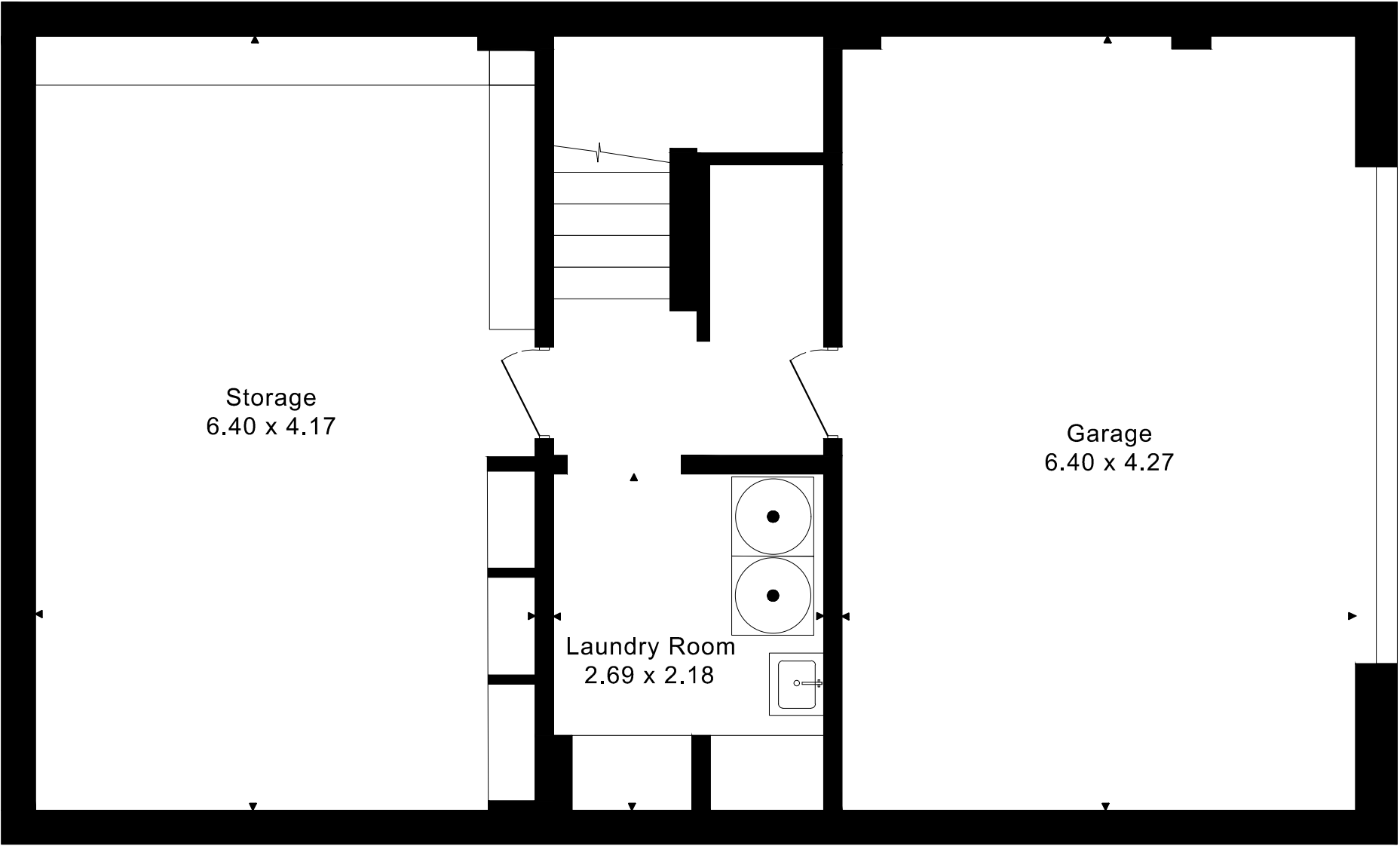


14 PASEO DEL RIO FLOOR PLANS

SECOND FLOOR 76.70 SQUARE METER



14 PASEO DEL RIO
FLOOR PLANS
LOWER FLOOR 90.20 SQUARE METER



14 PASEO DEL RIO ROOM MEASUREMENTS

Floor	Room	Metric [m]	
		Length	Width
Second	Primary Bedroom	6,30	4,34
	Primary Ensuite	2,39	1,73
	Second Bedroom	3,18	3,00
	Third Bedroom	3,18	3,00
	Bathroom	2,11	1,65
Main	Entry	2,21	1,47
	Living Room	4,11	3,43
	Dining Room	4,98	2,72
	Kitchen	3,45	2,62
	Closet	2,62	2,24
	Patio	4,85	3,15
Lower	Storage	6,40	4,17
	Laundry Room	2,69	2,18
	Garage	6,40	4,27

CAPTURED ON: 7 AUG 2023
DIMENSIONS ARE APPROXIMATE AND SHOULD BE CONSIDERED
ILLUSTRATIVE ONLY.

146.35 sq. met. + 90.20 sq. met.
BELOW GRADE

The following is a disclaimer regarding the approximate nature of dimensions and floor areas listed in this document:

Disclaimer:

The dimensions and floor areas listed in this document are provided as an estimate only and are intended to be used for illustration purposes only. These measurements are not necessarily meant to be a perfect representation of the actual space.

Notes regarding measurement methods and accuracy:

The utilization of laser measurement technology during the 3D model capturing process at the location provides an accurate representation of floor plans, with a typical margin of error of 3-5%. For the most accurate and official measurement data, it is advised to consult official documents such as MPAC records, builder's pre-construction plans, or data from certified measurement companies.

Exterior wall thickness is included in the calculation of the overall square footage and is considered as a component of the footprint. The wall thickness measurement is obtained onsite whenever possible, or estimated in the event where obtaining onsite measurements is not possible, such as in the case of condominium buildings where wall thickness may vary throughout the building.